

## Imagine being told you will lose your vision



**"I'm accustomed to reading and doing things at the church and I thought that's all going to stop. I was shocked."  
- William**

## HELPLINE

Access information and support to complement the care you receive from your eye health professional. Ask us about the latest nutrition recommendations, low vision equipment or what kind of funding you might be eligible for – we are experts in helping you navigate life with macular disease.

Our Helpline is available Monday to Friday 9am to 5pm (NSW, VIC and ACT).



## EYE CONNECT

**Holistic service customising all our offerings to your diagnosis and your needs. Delivered regularly in a format that suits you.**



## PEER SUPPORT

Connect with other people living with macular disease in a safe and supportive way. We offer in-person and online groups across the country and we are growing all the time. If accessing our group sessions is not possible, we have a one-on-one telephone service available.



## RESOURCES

Our extensive library of resources is approved by Australia's leading retinal specialists. You can view and order these via our website or call to get advice on which ones are right for you. You will find everything you need from information about your specific condition, to eye-friendly menus, and guides that will help you live well with macular disease.

**Your urgent support is needed today to help the most vulnerable members of our community.**

**\$50** – provides two people living with AMD with customised phone coaching via our helpline to help them manage their diagnosis.

**\$150** – trains one dedicated volunteer to provide one-on-one peer phone support.

**\$200** – provides 12-months of tailored health information and practical advice for one person.

**\$500** – provides one person with access to our bi-monthly face-to-face peer support groups across Australia.



**Donate now** to ensure ongoing support is available for people like William and no one faces this journey alone.

## How to donate today:

Visit [www.mdfoundation.com.au/tax25w1](http://www.mdfoundation.com.au/tax25w1)

Scan the QR code or  
Call **1800 111 709**



If you need support too, please consider joining Eye Connect at  
**[mdfoundation.com.au/support-me/support-services/eyeconnect](http://mdfoundation.com.au/support-me/support-services/eyeconnect)**



# THE EYE CONNECT JOURNEY

The number of people wanting to participate in Eye Connect is growing rapidly. More funding is urgently required to help the more vulnerable older members of our community. Eye Connect has been developed in collaboration with patients, carers, and eye care professionals, to ensure patients get the best care between clinical visits. While Eye Connect is currently only available to people living with age-related macular degeneration, we will be launching a new service for people diagnosed with diabetes related eye conditions in July 2025.

With your help, we can expand the Eye Connect service to all macular disease conditions into the future.

An Anglican priest since 1957 in regional NSW, William's life was rocked when diagnosed with AMD. Forced to stop a lot of his community duties, including visiting the sick in hospital, he now makes a four-hour round trip to receive treatment.

The need for support services outside of clinical settings is critical because of the growing prevalence of AMD.

64% of AMD patients are shocked by their diagnosis and need support.



**"Once I got in touch with the Eye Connect team, they began sending me information regularly. And they're working on some incredible research. Eye Connect is the way to go. I recommend people who are diagnosed with AMD to make the connection straight away, there's a lot of help there."**

**- William**

## DIAGNOSIS

A diagnosis of age-related macular degeneration (AMD) can be hard to hear and understand.



Feeling overwhelmed, worried or confused is common. That's where a service like **EYE CONNECT**, run by Macular Disease Foundation Australia (MDFA), can help.

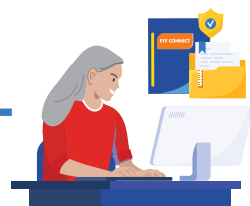
## UNDERSTANDING

When you join Eye Connect, our trusted and qualified team will be in touch to learn more about you and your experience with macular degeneration.



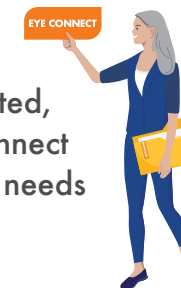
## SUPPORT

Accessing resources and information will help you understand your diagnosis and apply advice.



## PERSONALISED

You'll receive a Welcome Pack to get started, tailored to your situation. Then we will connect with you each month or so to assess your needs and provide more support.



## CONNECTION

MDFA will provide ongoing coaching calls, boosting your confidence to manage your AMD.



## LIVING WELL

You will feel prepared and confident at your future appointments with your eye professional.

